

Aluminum Railing Technologies Ltd.

APPROVAL STAMPS

TEST DRAWINGS

LAB: CAN-BEST LABORATORIES

LOCATION: 38 Regan Road, Unit 4, Brampton, Ontario, Canada, L7A 1C6

TYPES: RAILING TYPE 6

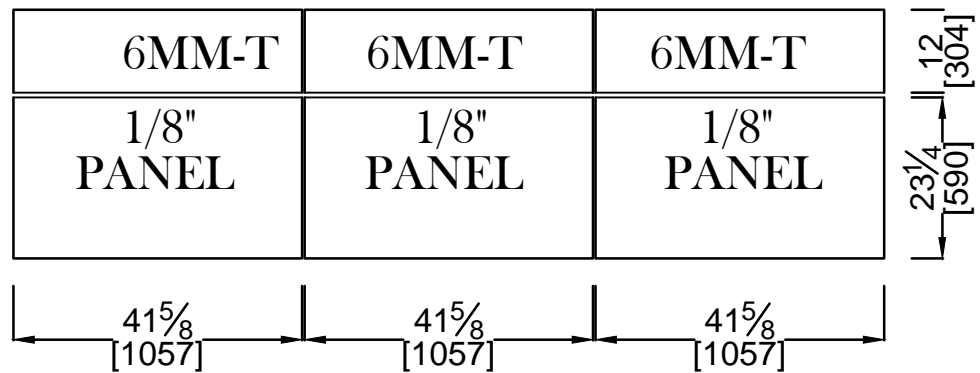
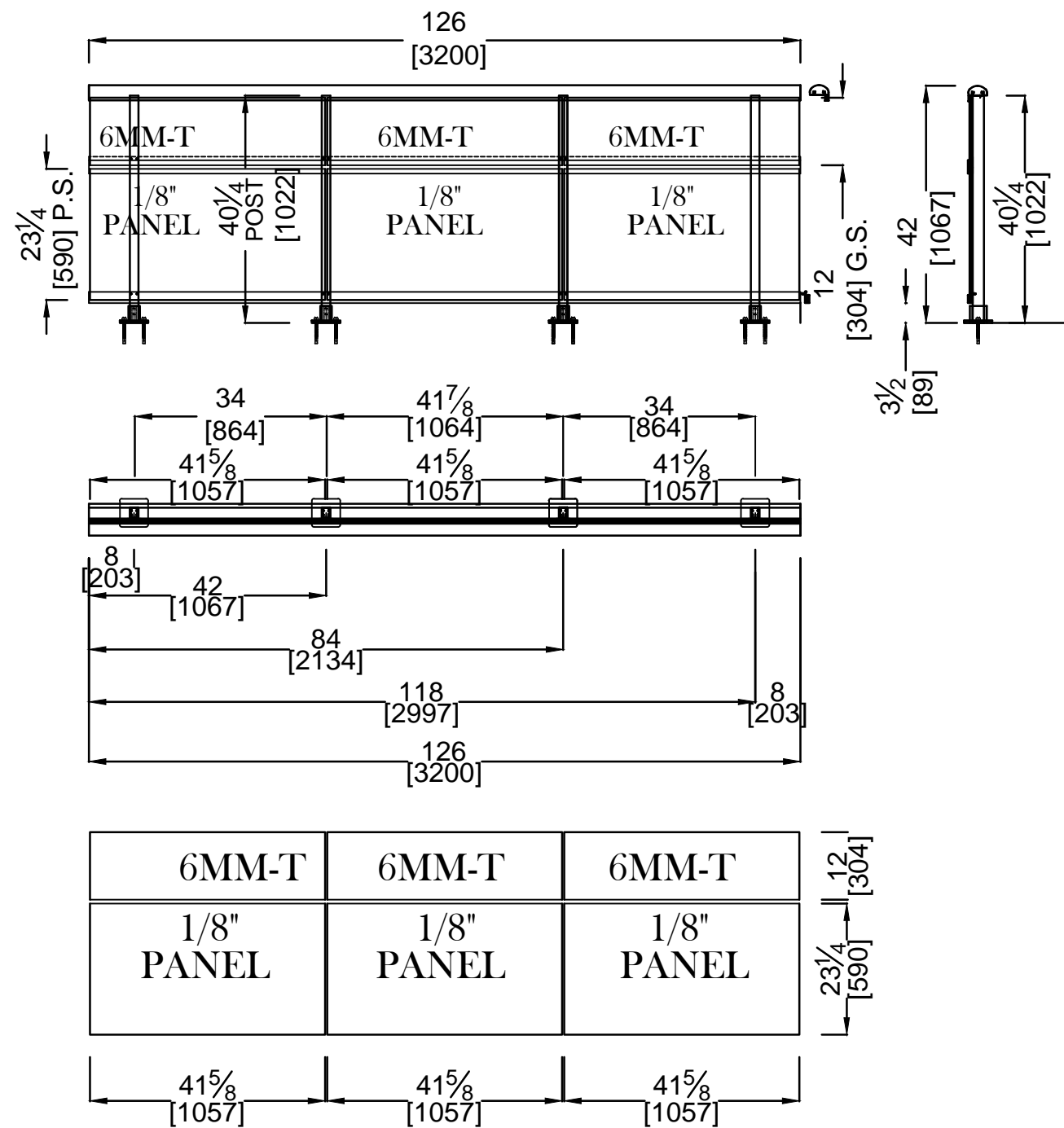
NOTES: _____

TEST DRAWING SET DATE: October 7, 2020

3091 FALBO RAILING TEST

TYPE #2: ALUM.GLASS RAILING TOP CAP, TOP MOUNTED

OCT-7-20

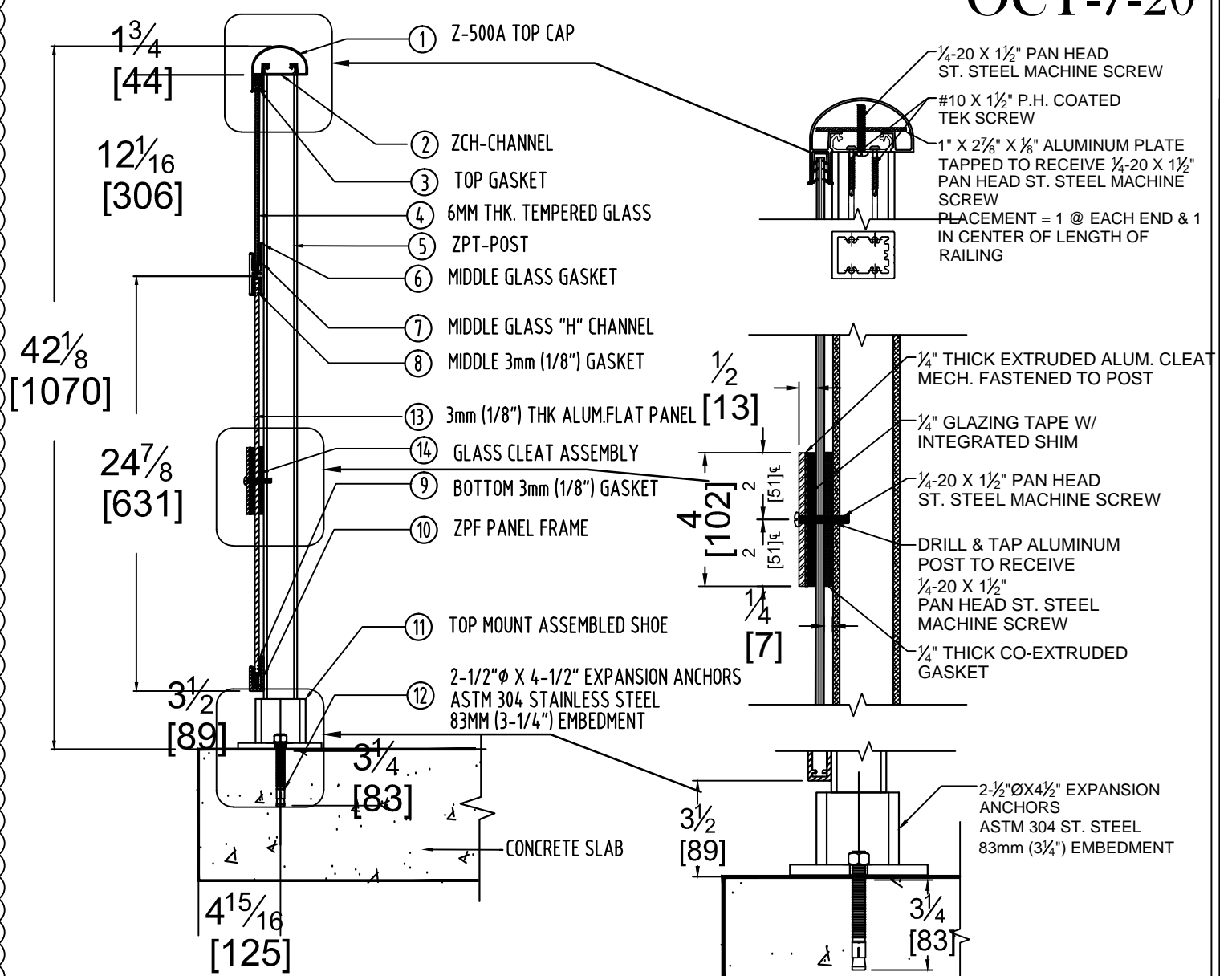


6mm TEMP = X 3

3mm ALUMINUM PANEL
= X 3


6mm CLEAR TEMPERED GLASS

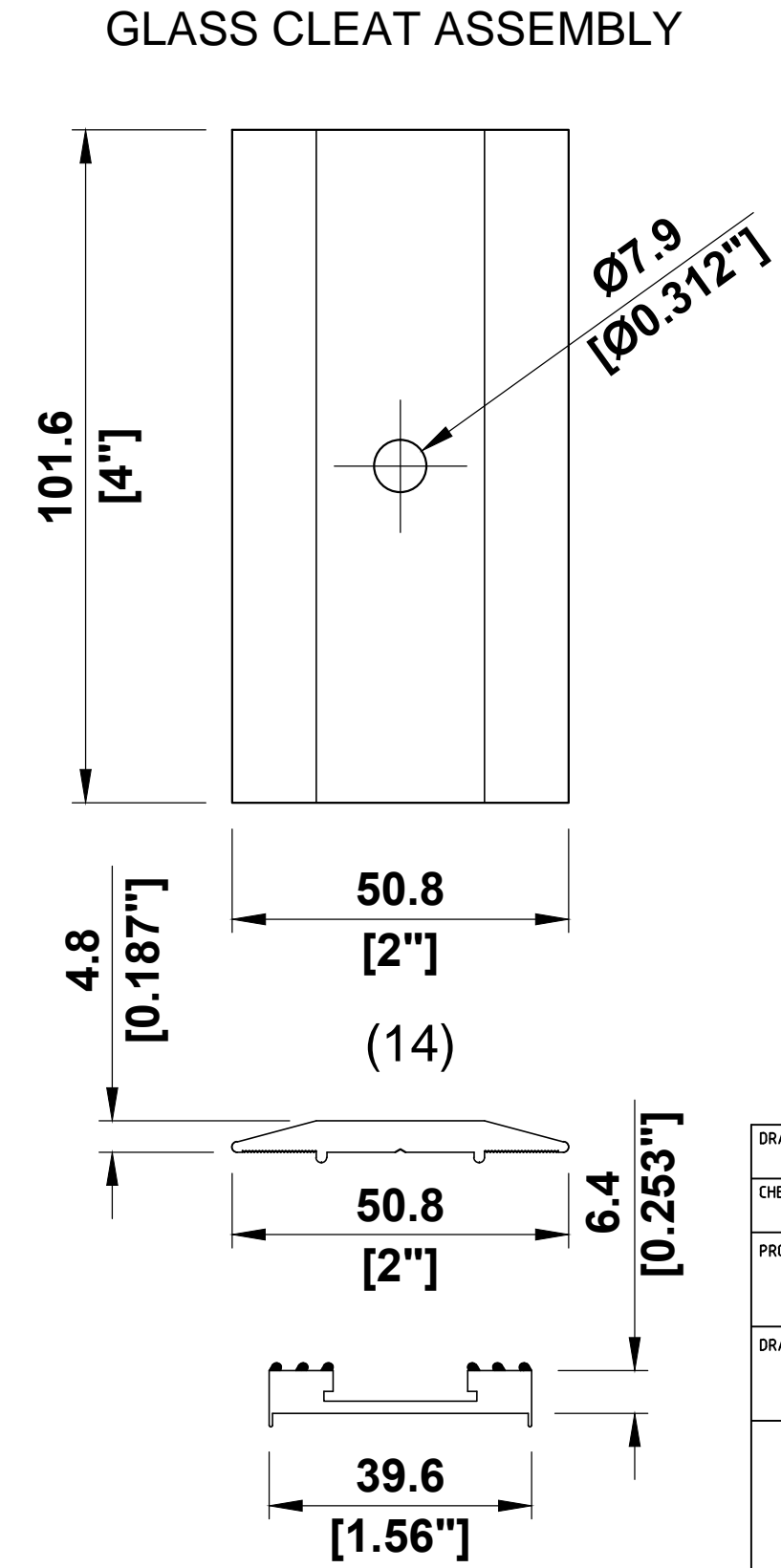
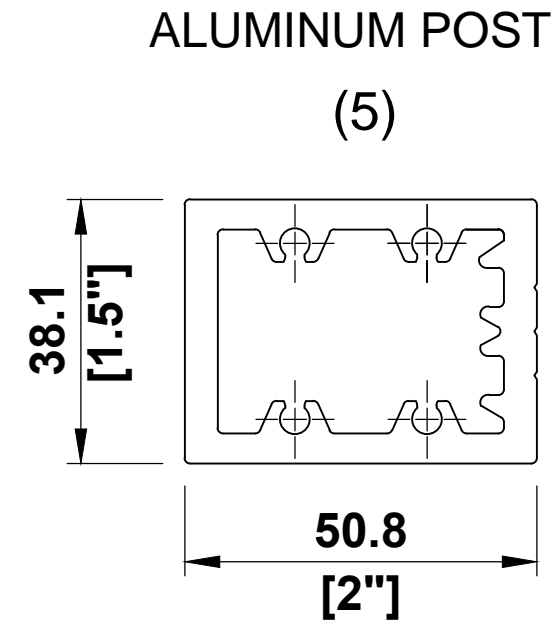
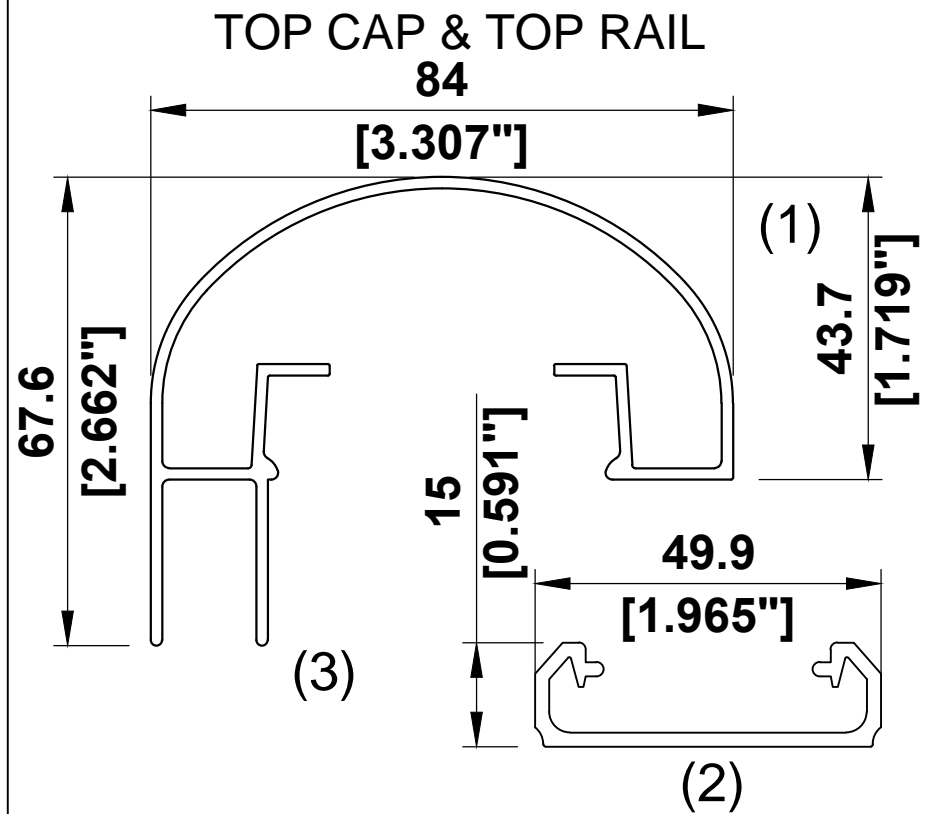
3mm ALUMINUM PANEL



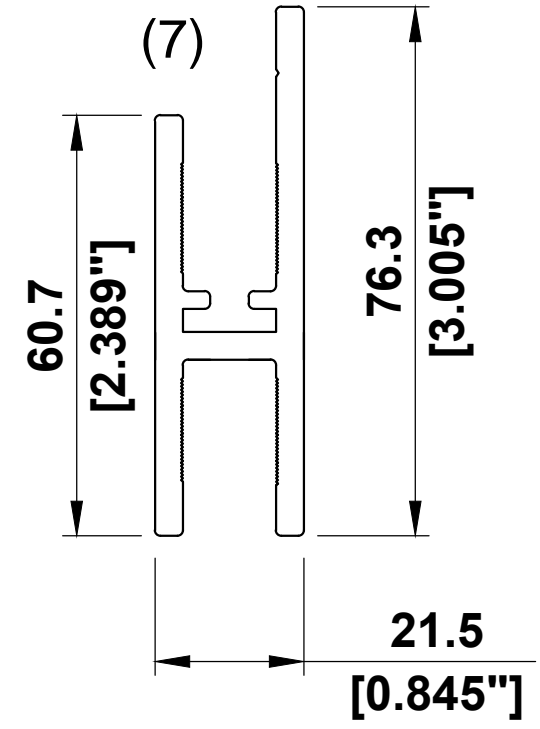
CROSS SECTION TYPE #6
GLASS & ALUM PANEL RAILING TOP CAP, TOP MOUNTED

ITEM NO.	DESCRIPTION	PART NUMBER
1	TOP CAP	AS-36124
2	TOP RAIL	AS-36087
3	TOP GASKET	V-858
4	6MM HEAT SOAKED TEMPERED GLASS	
5	POST	AH-72863
6	MIDDLE GLASS GASKET	V-783
7	MIDDLE GLASS CHANNEL	AS-72866
8	MIDDLE 1/8" GASKET	V-858
9	BOTTOM 1/8" GASKET	V-806
10	BOTTOM GLASS CHANEL	AS-72864
11	TOP ASSEMBLED SHOE	
12	1/2"Ø x 4 1/2" EXPANSION ANCHORS	STAINLESS STEEL
13	1/8" ALUMINUM PANEL	
14	GLASS CLEAT ASSEMBLY	

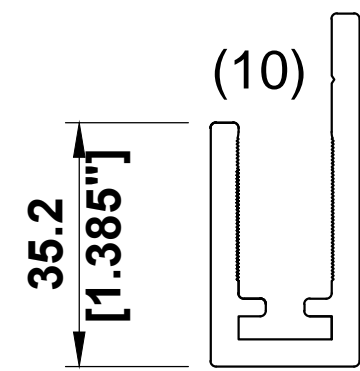
DRAWN BY: MD DATE: 10/07/2020
 CHECKED BY: IW SCALE: NTS.
 PROJECT: RAILING TEST
 DRAWING TITLE: TYPE 6 BALCONY RAILING

 aluminum railing technologies ltd.
 66 Rivalda Rd, Toronto, Ontario M9M 2M3
 Tel: (416) 740-9304 Fax: (416) 740-0720
 Email:
 DRAWING NO: RT-2




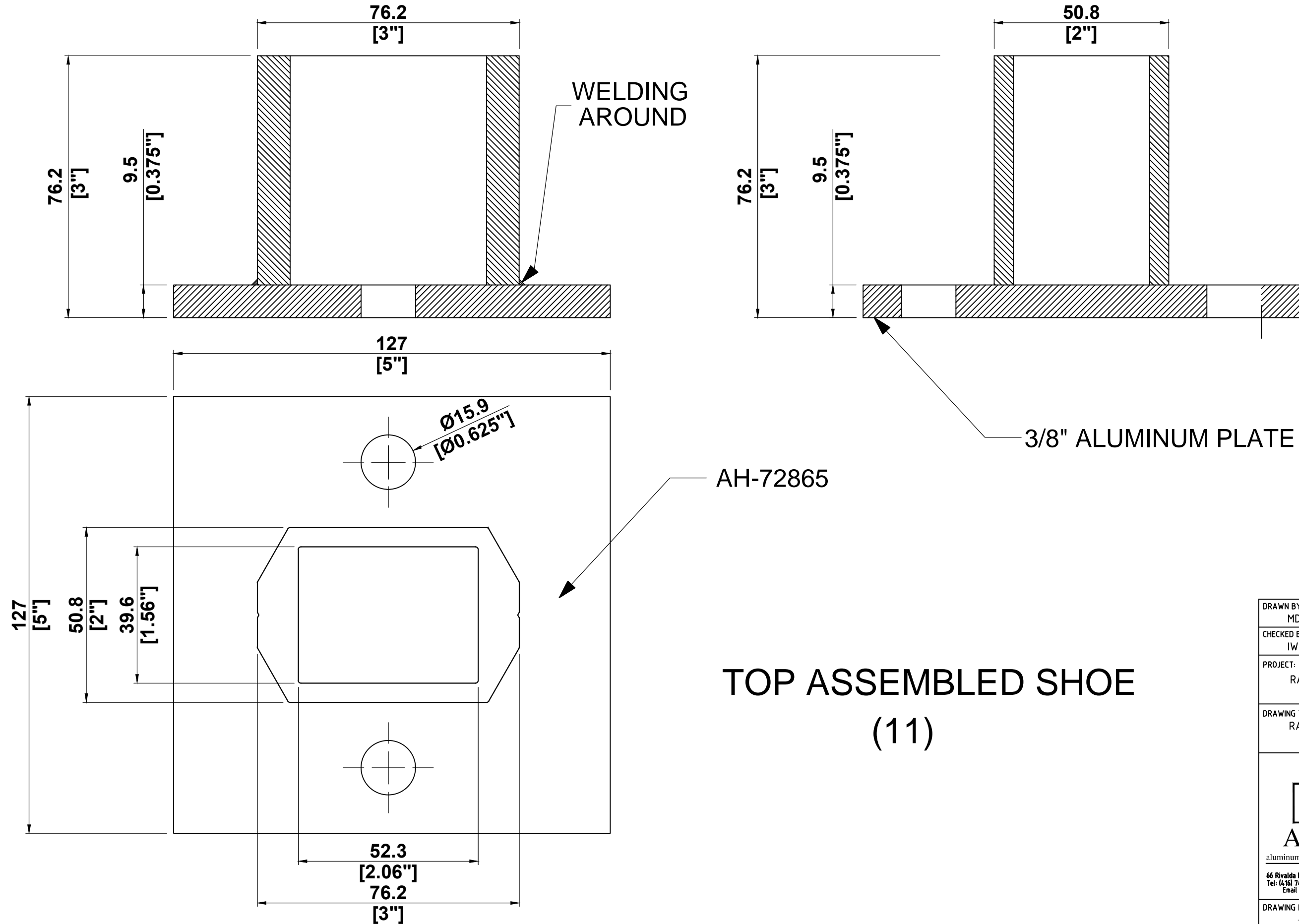
INTERMEDIATE GLASS & ALUM. PANEL CHANNEL




BOTTOM GLASS & ALUM. PANEL CHANNEL



DRAWN BY: MD	DATE: 10/07/2020
CHECKED BY: IW	SCALE: NTS.
PROJECT: RAILING TEST	
DRAWING TITLE: RAILING PROFILE DETAILS	
 ART aluminum railing technologies ltd.	
66 Rivalda Rd, Toronto, Ontario M9M 2M3 Tel: (416) 740-9304 Fax: (416) 740-0720 Email:	
DRAWING NO: DT-1	



TOP ASSEMBLED SHOE
(11)

DRAWN BY: MD	DATE: 10/07/2020
CHECKED BY: IW	SCALE: NTS.
PROJECT: RAILING TEST	
DRAWING TITLE: RAILING PROFILE DETAILS	
 ART aluminum railing technologies ltd.	
66 Rivalda Rd, Toronto, Ontario M9M 2M3 Tel: (416) 740-9304 Fax: (416) 740-0720 Email:	
DRAWING NO: DT-2	